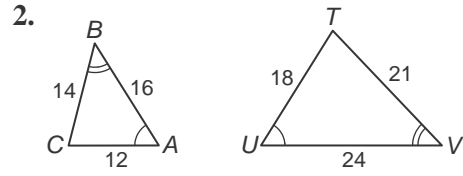
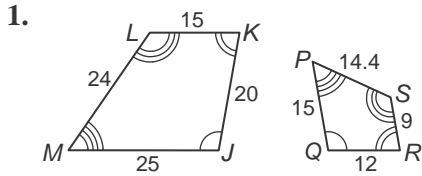


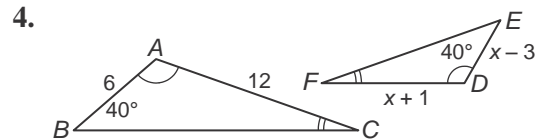
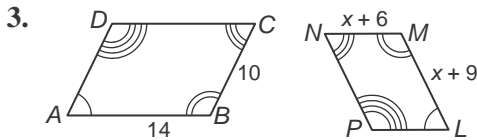
7-2 Practice

Similar Polygons

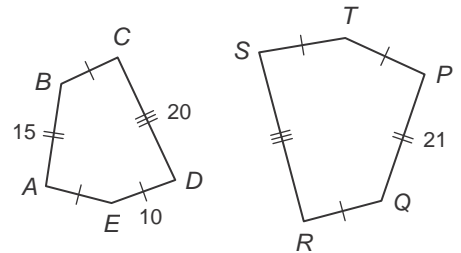
Determine whether each pair of figures is similar. If so, write the similarity statement and scale factor. If not, explain your reasoning.



Each pair of polygons is similar. Find the value of x .



5. **PENTAGONS** If $ABCDE \sim PQRST$, find the scale factor of $ABCDE$ to $PQRST$ and the perimeter of each polygon.



6. **SWIMMING POOLS** The Minnitte family and the neighboring Gaudet family both have in ground swimming pools. The Minnitte family pool, $PQRS$, measures 48 feet by 84 feet. The Gaudet family pool, $WXYZ$, measures 40 feet by 70 feet. Are the two pools similar? If so, write the similarity statement and scale factor.

