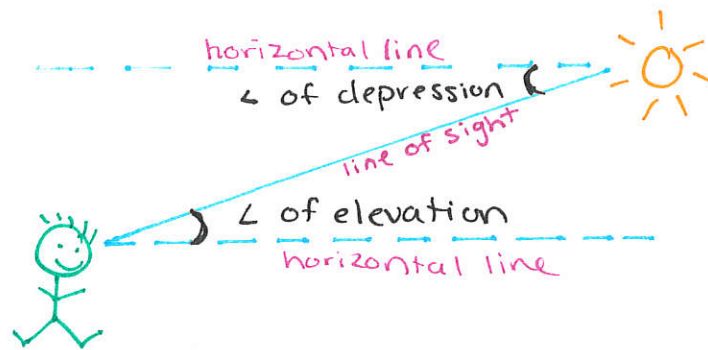


8-5 Angles of Elevation & Depression

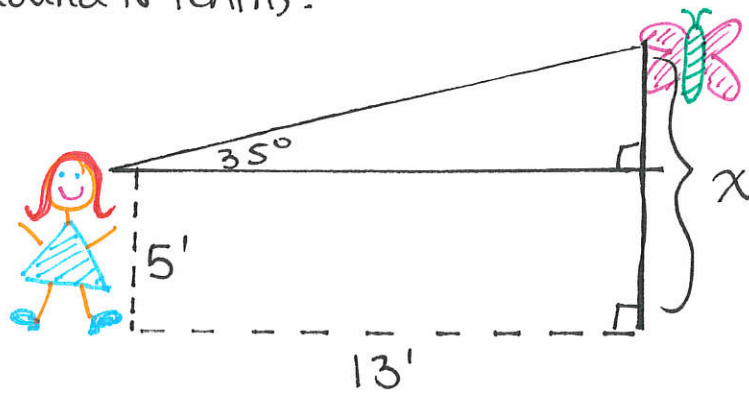


* \angle s of elev. & dep. are \cong (alt-int. \angle s th.)

Ex: A sailor spots a lighthouse from sea. The lighthouse light is 30 m above sea level. \angle of elevation from the sailor to the light is 25° . How far away is the lighthouse?

Ex: You are climbing a tree and see a bunny in the grass. You are 20 ft high and look down at a 52° \angle of depression. How far from the tree base is the bunny?

Ex: Round to tenths.



Ex: Round to tenths.

