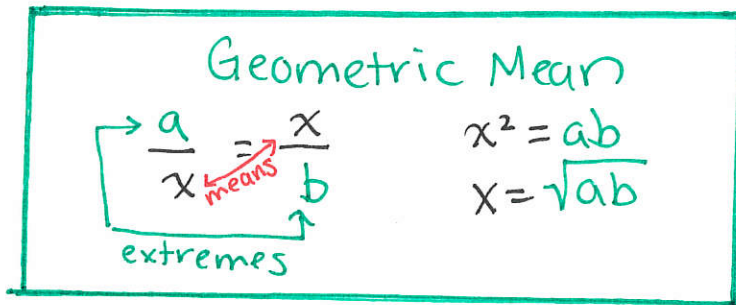


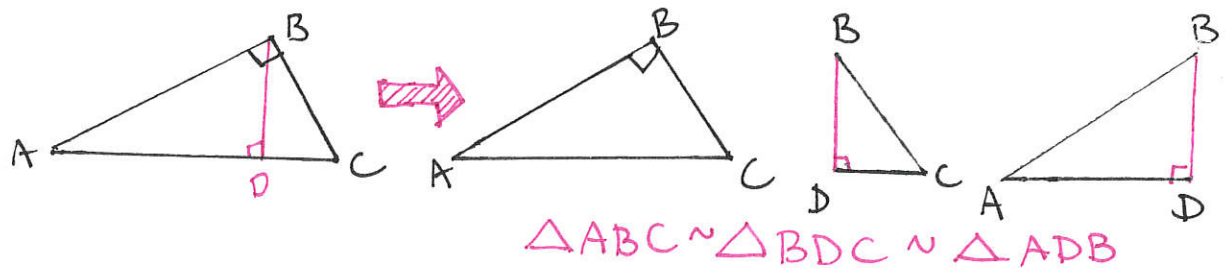
## 8-1 Geometric Mean



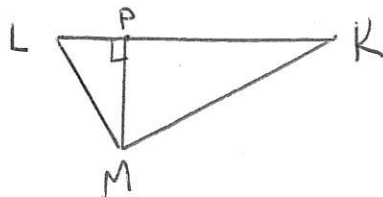
Ex: Find the geometric mean of 5 & 45.

### Similarity in Right Triangles

In a right  $\Delta$ , the altitudes from rt.  $\angle$  to hypotenuse, creates 3 similar  $\Delta$ s.

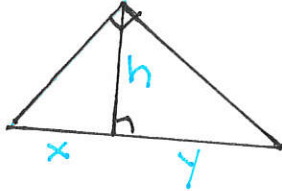


Ex: Write similarity statement for the 3 similar  $\Delta$ s.



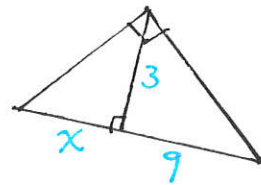
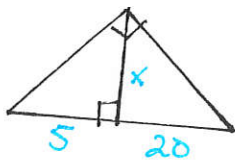
## Right Triangle & Geometric Mean

Heart-Beat

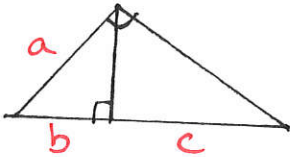


$$\frac{x}{h} = \frac{h}{y} \rightarrow \begin{matrix} \updownarrow \\ \leftarrow \rightarrow \end{matrix}$$


Ex:

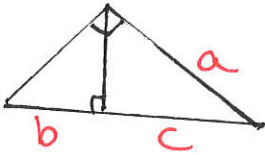


Mountain Climber

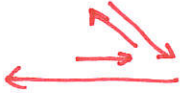


$$\frac{b}{a} = \frac{a}{b+c}$$

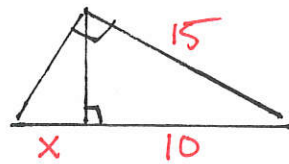
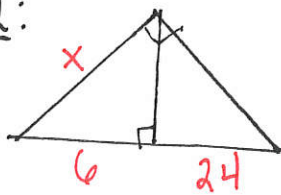




$$\frac{c}{a} = \frac{a}{b+c}$$



Ex:



Ex:

