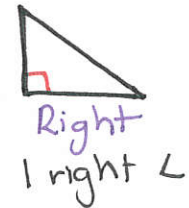
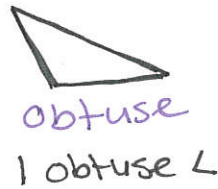
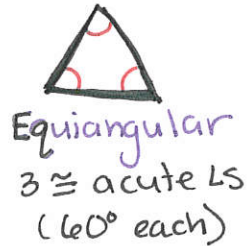
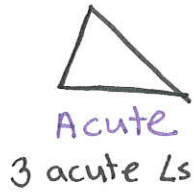
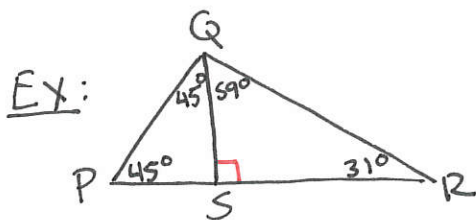
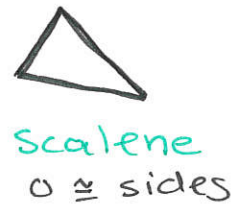
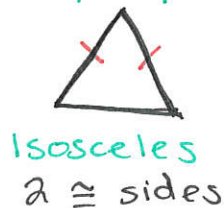
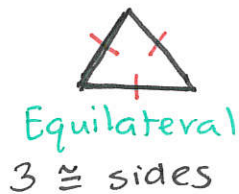


4-1 Classifying Triangles

Classify by Angles



Classify by Sides

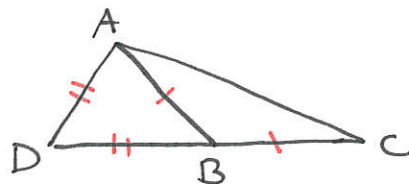


Classify by angle:

$\triangle PQS$
 $\triangle QRS$
 $\triangle PQR$

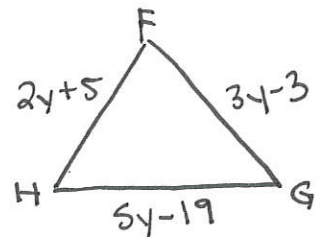
Ex: classify by sides:

$\triangle ABC$
 $\triangle ADB$
 $\triangle ADC$



Ex: Find y .

$\triangle FGH$ is equilateral.



EX: Classify $\triangle KPL$ by its sides.

$$K(-3, 2)$$

$$P(2, 1)$$

$$L(-2, -3)$$

